

Company: Esso Australia

Well: SNA A-24a

Field: Snapper

Rig: ISS Rig 22

Country: Australia

3.65" Powercutter
Tubing Cut Record
1-May- 2007

Rig: ISS Rig 22	
Field: Snapper	
Location: Bass Strait	
Well: SNA A-24a	
Company: Esso Australia	
LOCATION	
Bass Strait Gippsland Basin	Elev.: K.B. 33.5 m G.L. -59.4 m D.F. 32 m
Permanent Datum: _____ Log Measured From: _____ Drilling Measured From: _____	MSL _____ Drill Floor _____ Kelly Bushing _____ Elev.: 0 m 32.0 m above Perm. Datum
State: Victoria	Max. Well Deviation 62 deg Longitude 148° 1' 31.733"E Latitude 38° 11' 37.793"S

	Run 1	Run 2	Run 3
Oil Density			
Water Salinity			
Gas Gravity			
Bo			
Bw			
1/Bg			
Bubble Point Pressure			
Bubble Point Temperature			
Solution GOR			
Maximum Deviation	62 deg		
CEMENTING DATA			
Primary/Squeeze	Primary		
Casing String No			
Lead Cement Type			
Volume			
Density			
Water Loss			
Additives			
Tail Cement Type			
Volume			
Density			
Water Loss			
Additives			
Expected Cement Top			

Logging Date		1-May-2007		
Run Number	1			
Depth Driller	2348 m			
Schlumberger Depth	2095.5 m			
Bottom Log Interval	2086 m			
Top Log Interval	1955 m			
Casing Fluid Type	Produced Fluid			
Salinity				
Density				
Fluid Level				
BIT/CASING/TUBING STRING				
Bit Size	8.500 in			
From	691 m			
To	2348 m			
Casing/Tubing Size	4.500 in			
Weight	12.75 lbm/ft			
Grade	J-55			
From	1938 m			
To	2211 m			
Maximum Recorded Temperatures				
Logger On Bottom	1-May-2006		15:55	
Unit Number	3827	AUSL		
Recorded By	C.Rowand			
Witnessed By	Mr B.Robinson, Mr A.Smythe			

Logging Date			
Run Number			
Depth Driller			
Schlumberger Depth			
Bottom Log Interval			
Top Log Interval			
Casing Fluid Type			
Salinity			
Density			
Fluid Level			
BIT/CASING/TUBING STRING			
Bit Size			
From			
To			
Casing/Tubing Size			
Weight			
Grade			
From			
To			
Maximum Recorded Temperatures			
Logger On Bottom			
Unit Number			
Recorded By			
Witnessed By			

DEPTH SUMMARY LISTING

Date Created: 2-MAY-2007 2:49:55

Depth System Equipment

Depth Measuring Device		Tension Device		Logging Cable	
Type:	IDW-H	Type:	CMTD-B/A	Type:	2-32ZT
Serial Number:	794	Serial Number:	1711	Serial Number:	24031
Calibration Date:	20-Mar-2007	Calibration Date:	23-Mar-2007	Length:	5550.10 M
Calibrator Serial Number:	9	Calibrator Serial Number:	1173	Conveyance Method:	Wireline
Calibration Cable Type:	2-32ZT	Calibration Gain:	1.00	Rig Type:	Offshore_Fixed
Wheel Correction 1:	-3	Calibration Offset:	637.00		
Wheel Correction 2:	-3				

Depth Control Parameters

Log Sequence:	Subsequent Log In the Well
Reference Log Name:	Tubing Tally
Reference Log Run Number:	
Reference Log Date:	NA

Depth Control Remarks

1. Correlated to Tubing Tally
2. Used IDW as primary depth control
3. Used Z_Chart as secondary depth control
- 4.
- 5.
- 6.

DISCLAIMER

THE USE OF AND RELIANCE UPON THIS RECORDED-DATA BY THE HEREIN NAMED COMPANY (AND ANY OF ITS AFFILIATES, PARTNERS, REPRESENTATIVES, AGENTS, CONSULTANTS AND EMPLOYEES) IS SUBJECT TO THE TERMS AND CONDITIONS AGREED UPON BETWEEN SCHLUMBERGER AND THE COMPANY, INCLUDING: (a) RESTRICTIONS ON USE OF THE RECORDED-DATA; (b) DISCLAIMERS AND WAIVERS OF WARRANTIES AND REPRESENTATIONS REGARDING COMPANY'S USE OF AND RELIANCE UPON THE RECORDED-DATA; AND (c) CUSTOMER'S FULL AND SOLE RESPONSIBILITY FOR ANY INFERENCE DRAWN OR DECISION MADE IN CONNECTION WITH THE USE OF THIS RECORDED-DATA.

OTHER SERVICES1	OTHER SERVICES2
OS1: Puncher	OS1:
OS2:	OS2:
OS3:	OS3:
OS4:	OS4:
OS5:	OS5:

REMARKS: RUN NUMBER 1	REMARKS: RUN NUMBER 2
-----------------------	-----------------------

Log correlated to Tubing Tally

Objective:

Rig up wireline, RIH with a 3.65" Powercutter with 1-11/16" CCL and cut the

4-1/2" tubing @ 2m above HUD. Then punch the tubing below the top packer to

allow gas to escape.

Tubing cut with Powercutter @ 2086 M









Powercutter CCL to Cutter = 1.91M

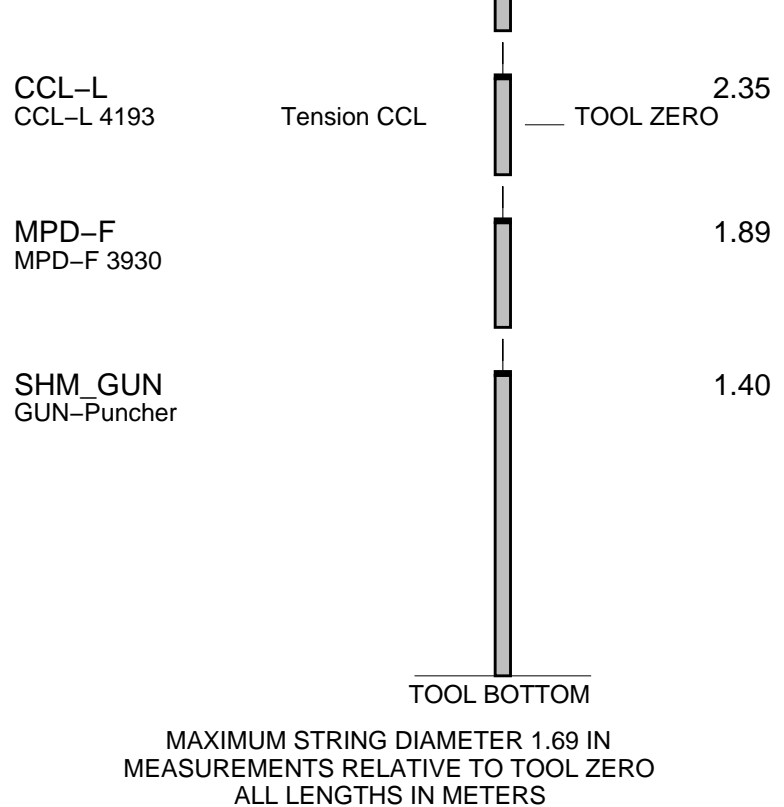
Small Puncher (13) charges were used to Punch tubing @ 1955-1956 M
Puncher CCL to Top Shot = 1.03 M

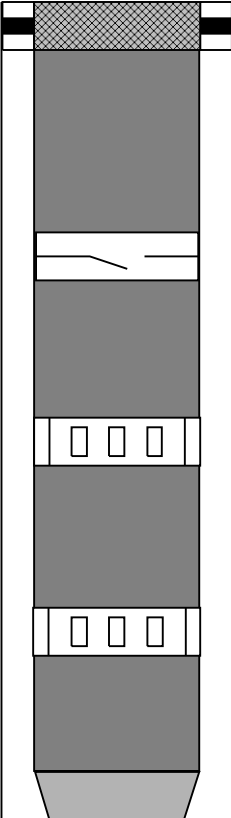
Schlumberger Crew:
Operators
Days: Peter Battams, Gerald Brady
Nights: Dave Stuckey, Simon Kiss

RUN 1			RUN 2		
SERVICE ORDER #: PROGRAM VERSION: 14C0-302 FLUID LEVEL:			SERVICE ORDER #: PROGRAM VERSION: FLUID LEVEL:		
LOGGED INTERVAL	START	STOP	LOGGED INTERVAL	START	STOP

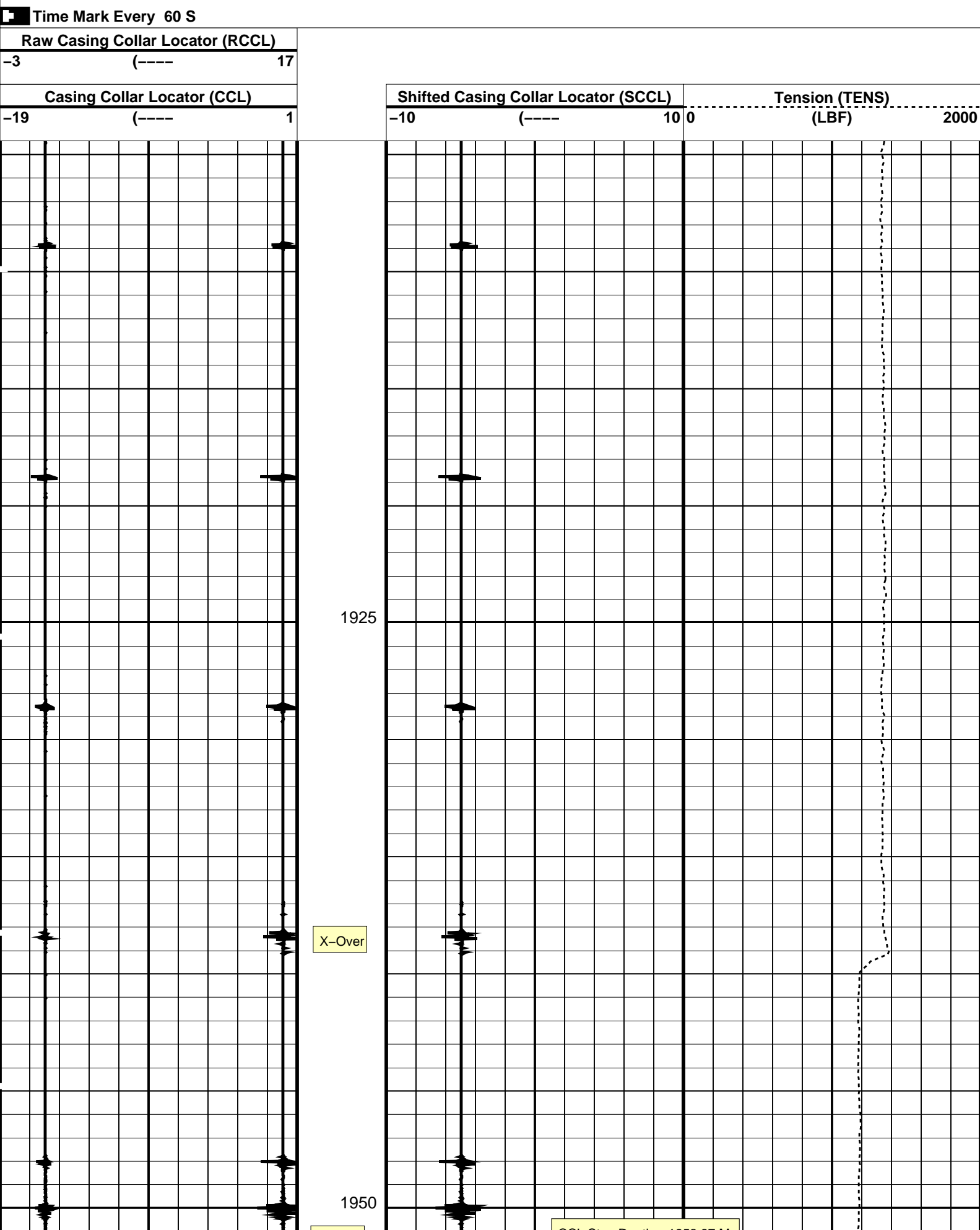
EQUIPMENT DESCRIPTION					
RUN 1			RUN 2		
SURFACE EQUIPMENT			SURFACE EQUIPMENT		
WITM (SHM)			WITM (SHM)		

DOWNHOLE EQUIPMENT			DOWNHOLE EQUIPMENT		
MH-22 MH-22		6.22	MH-22 MH-22		6.94
EQF-46 EQF-46 210		5.74	SAH-G SAH-G		6.46
EQF-46 EQF-46 211		3.91	EQF-43 EQF-43 201		6.01
CCL-L		2.08	EQF-43 EQF-43 281		4.18



Production String	(in)		(m)	Well Schematic	(m)		(in)	Casing String
	OD	ID	MD		MD	OD	ID	
Tubing Hanger	7.63	5.50	10		7.625	6.969	Casing String	
Tubing	5.50	4.89						
SSSV	5.50	4.56	464					
Sliding Sleeve	5.50	4.56	848					
Sliding Sleeve	5.50	4.56	1387					
Crossover Joint	5.50	4.50	1938.0					

PIP SUMMARY

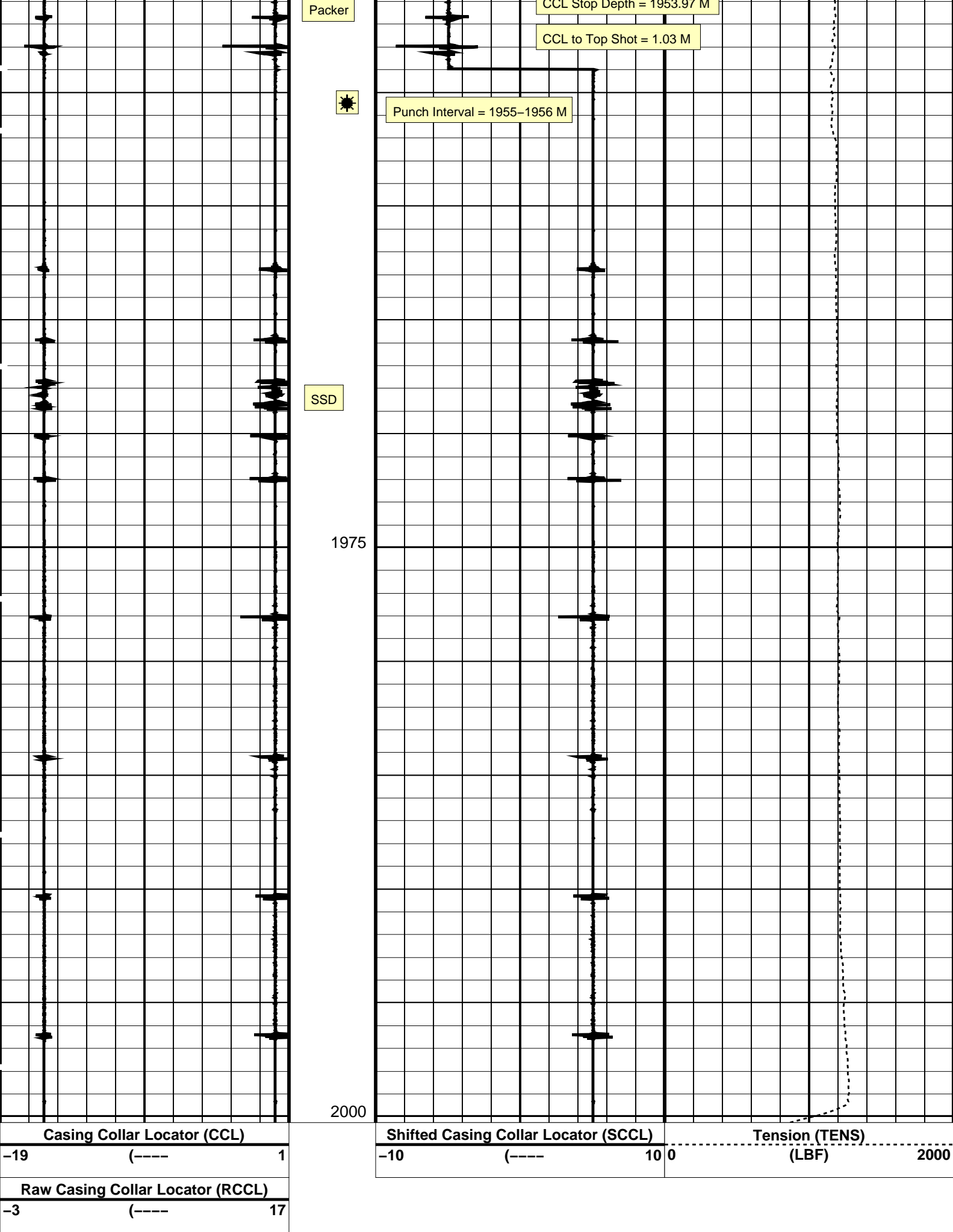


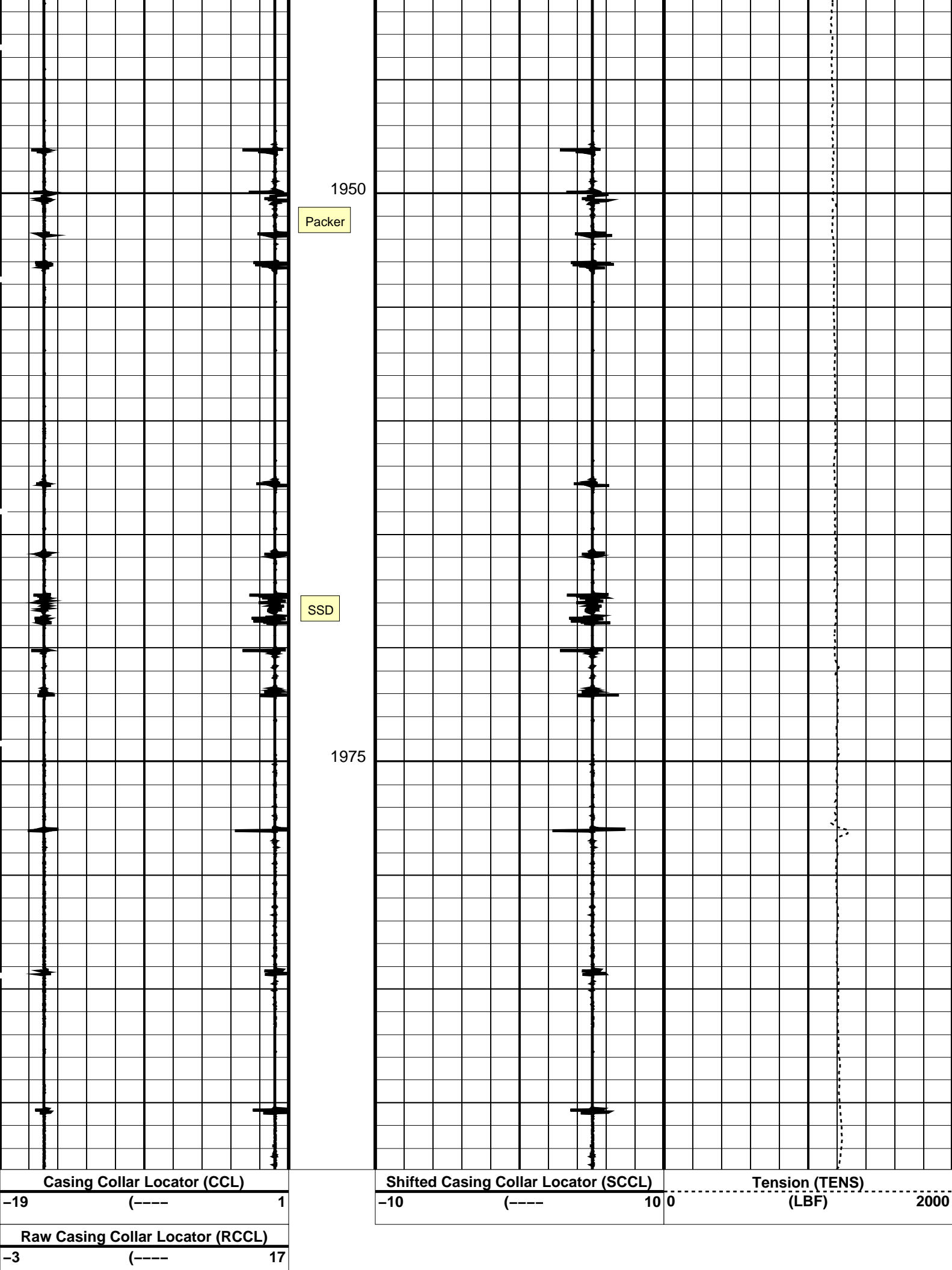
1925

X-Over

1950

CCL-2: Position 1250-1251





PIP SUMMARY

Time Mark Every 60 S

Parameters

DLIS Name	Description	Value
CCL-L: Casing Collar Locator		
CCLD	CCL reset delay	12 IN
CCLT	CCL Detection Level	0.3 V

Format: CCLLog Vertical Scale: 1:200 Graphics File Created: 02-May-2007 10:31

OP System Version: 14C0-302

MCM

SHM_GUN 14C0-302 CCL-L 14C0-302

Output DLIS Files

DEFAULT PERFO_009LUP FN:10 PRODUCER 02-May-2007 10:31

Schlumberger

Powercutter #1
Firing Cut Record

MAXIS Field Log

PERFO2 Operational Summary Listing				
Device	Status	Req Depth (M)	Obs Depth (M)	Time Used
-----	-----	-----	-----	-----
Power	Used	2086.0	2086.0	Wed May 02 03:55:58 2007
Cutter#1				

Company: Esso AustraliaWell: SNA A-24a

Output DLIS Files

DEFAULT PERFO_007LUP FN:8 PRODUCER 02-May-2007 03:53 2089.7 M 1936.9 M

OP System Version: 14C0-302

MCM

SHM_GUN 14C0-302 CCL-L 14C0-302

PIP SUMMARY

Time Mark Every 60 S

Raw Casing Collar Locator (RCCL)

-3 (----) 17

Casing Collar Locator (CCL)

-19 (----) 1

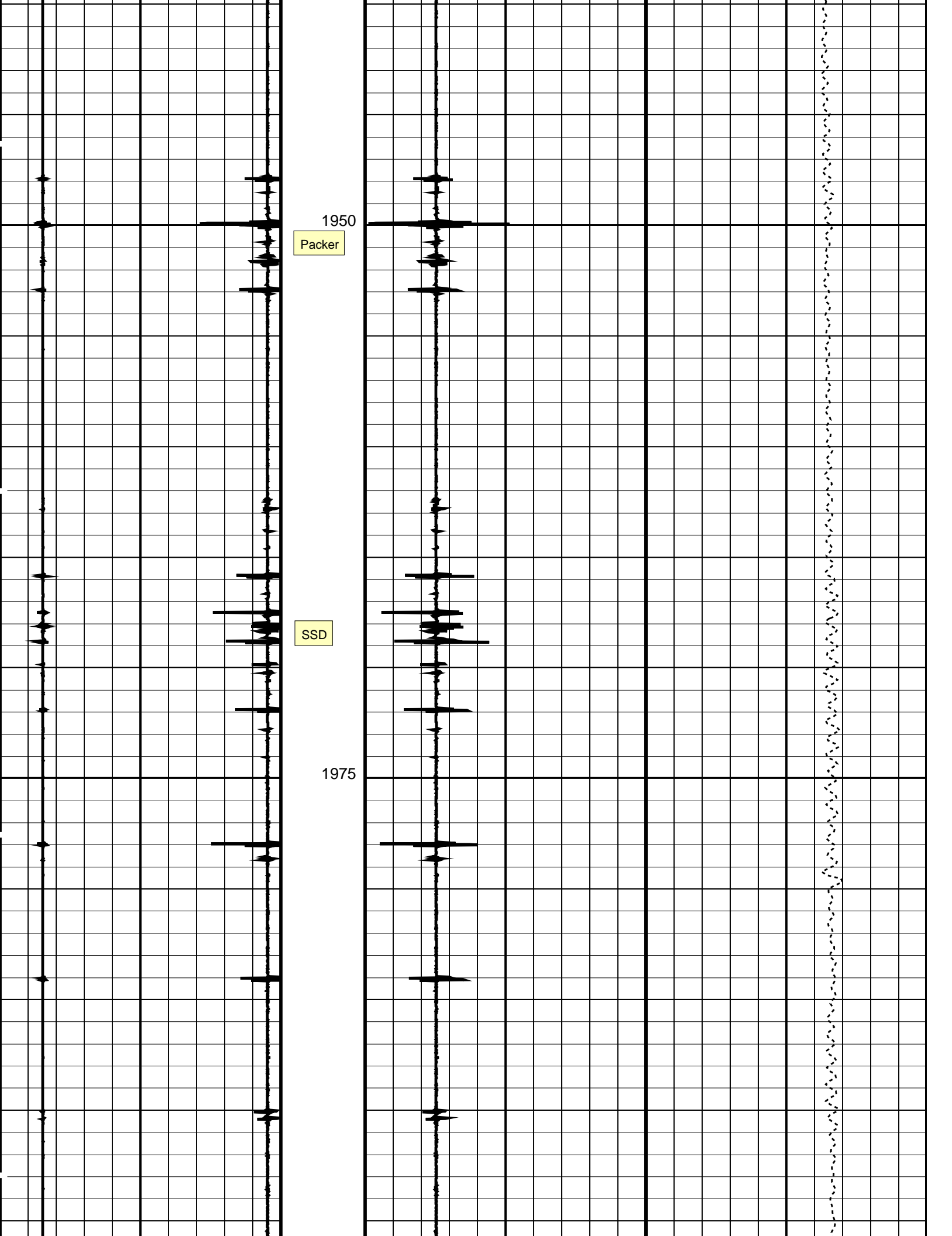
Shifted Casing Collar Locator (SCCL)

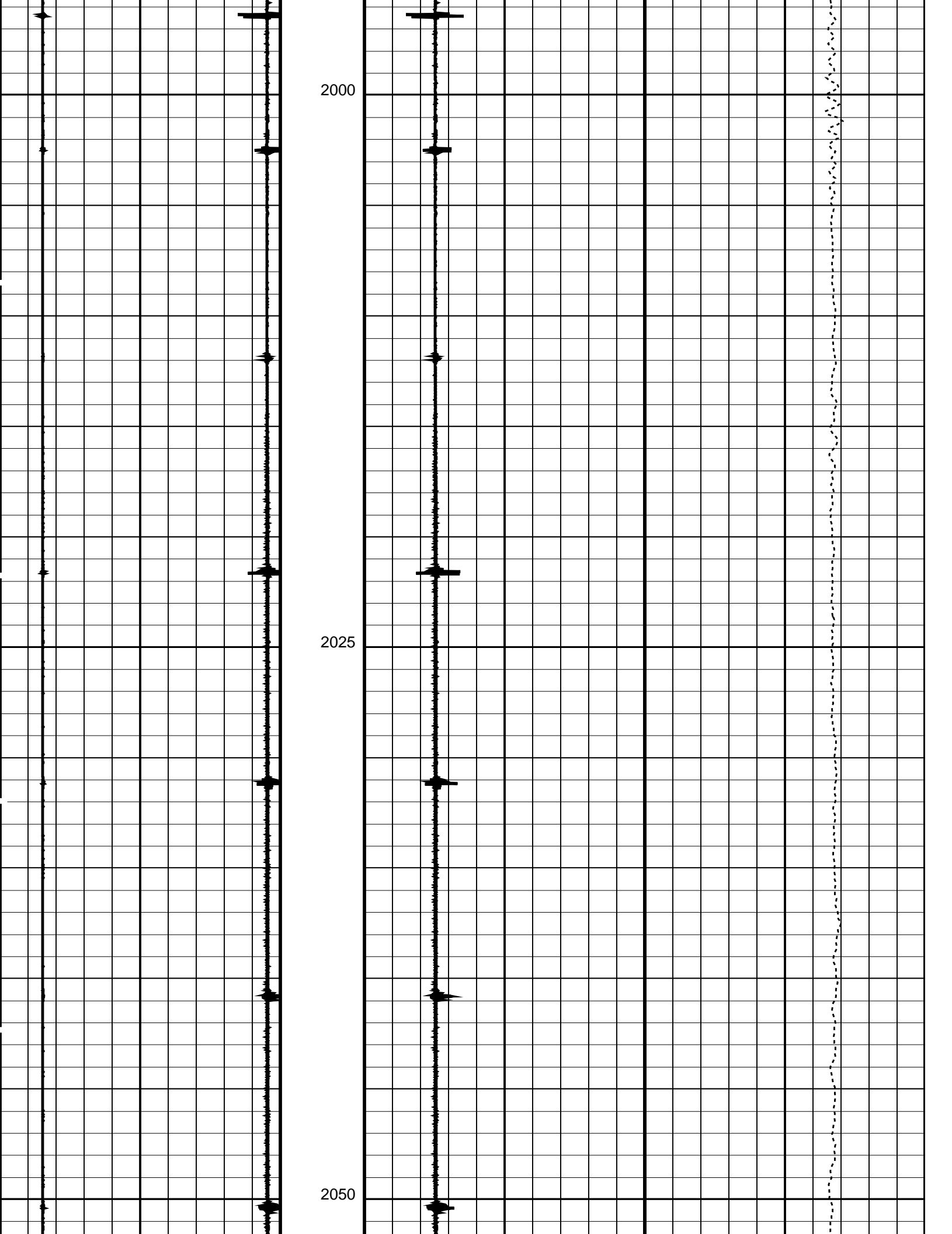
-10 (----) 10 0

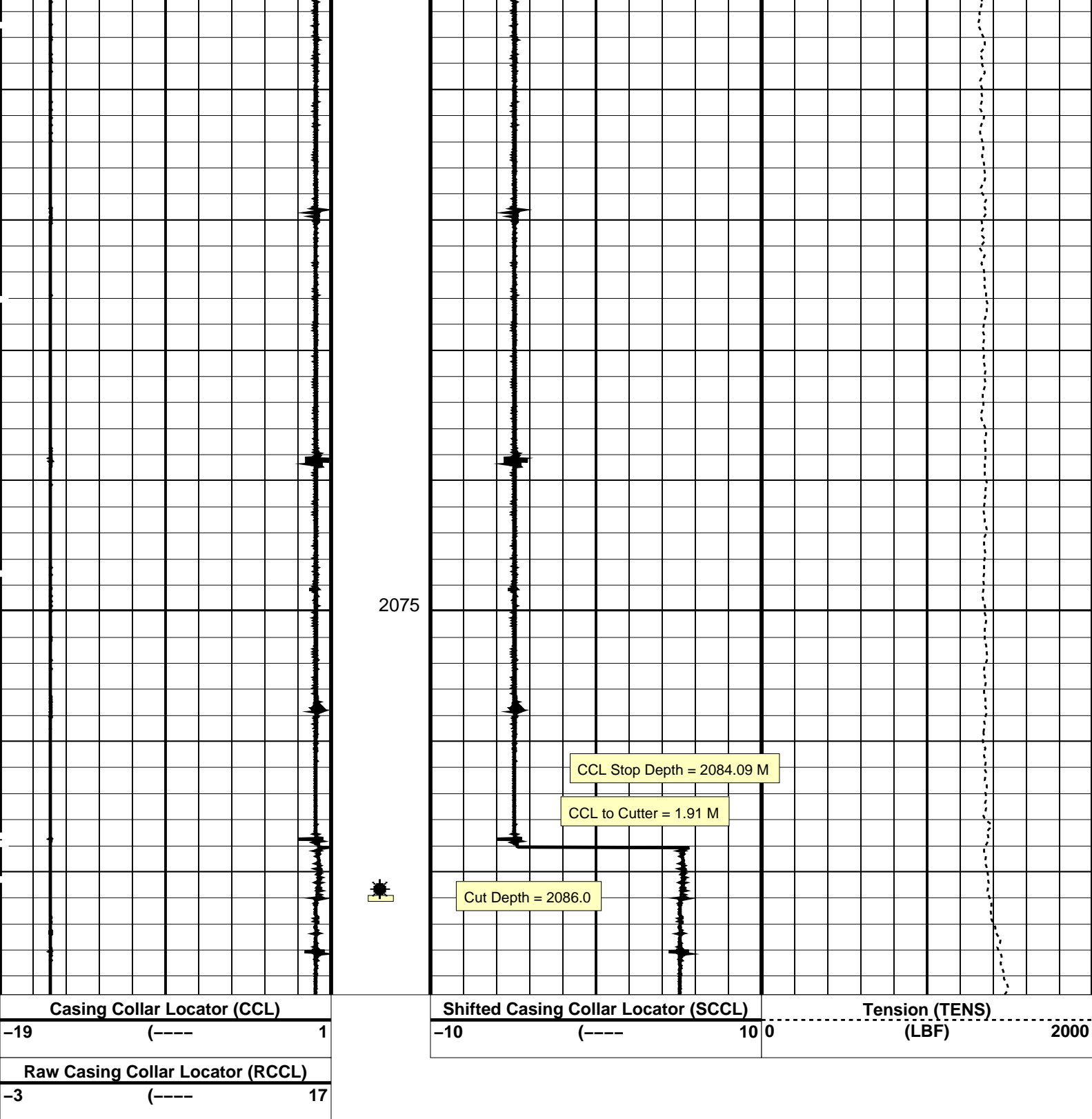
Tension (TENS)

(LBF) 2000

X-Over







PIP SUMMARY

Time Mark Every 60 S

Parameters		
DLIS Name	Description	Value
CCLD	CCL-L: Casing Collar Locator	12 IN
CCLT	CCL reset delay	0.3 V
	CCL Detection Level	

Format: CCLLog Vertical Scale: 1:200 Graphics File Created: 02-May-2007 03:53

Output DLIS Files

DEFAULT

PERFO_007LUP

FN:8

PRODUCER

02-May-2007 03:53

Schlumberger

Powercutter #1 Correlation Pass

MAXIS Field Log

Company: Esso Australia

Well: SNA A-24a

Output DLIS Files

DEFAULT

PERFO_006LUP

FN:7

PRODUCER

02-May-2007 03:28 2091.2 M

2039.0 M

OP System Version: 14C0-302

MCM

SHM_GUN

14C0-302

CCL-L

14C0-302

PIP SUMMARY

☒ Time Mark Every 60 S

Raw Casing Collar Locator (RCCL)

-3 (----) 17

Casing Collar Locator (CCL)

-19 (----) 1

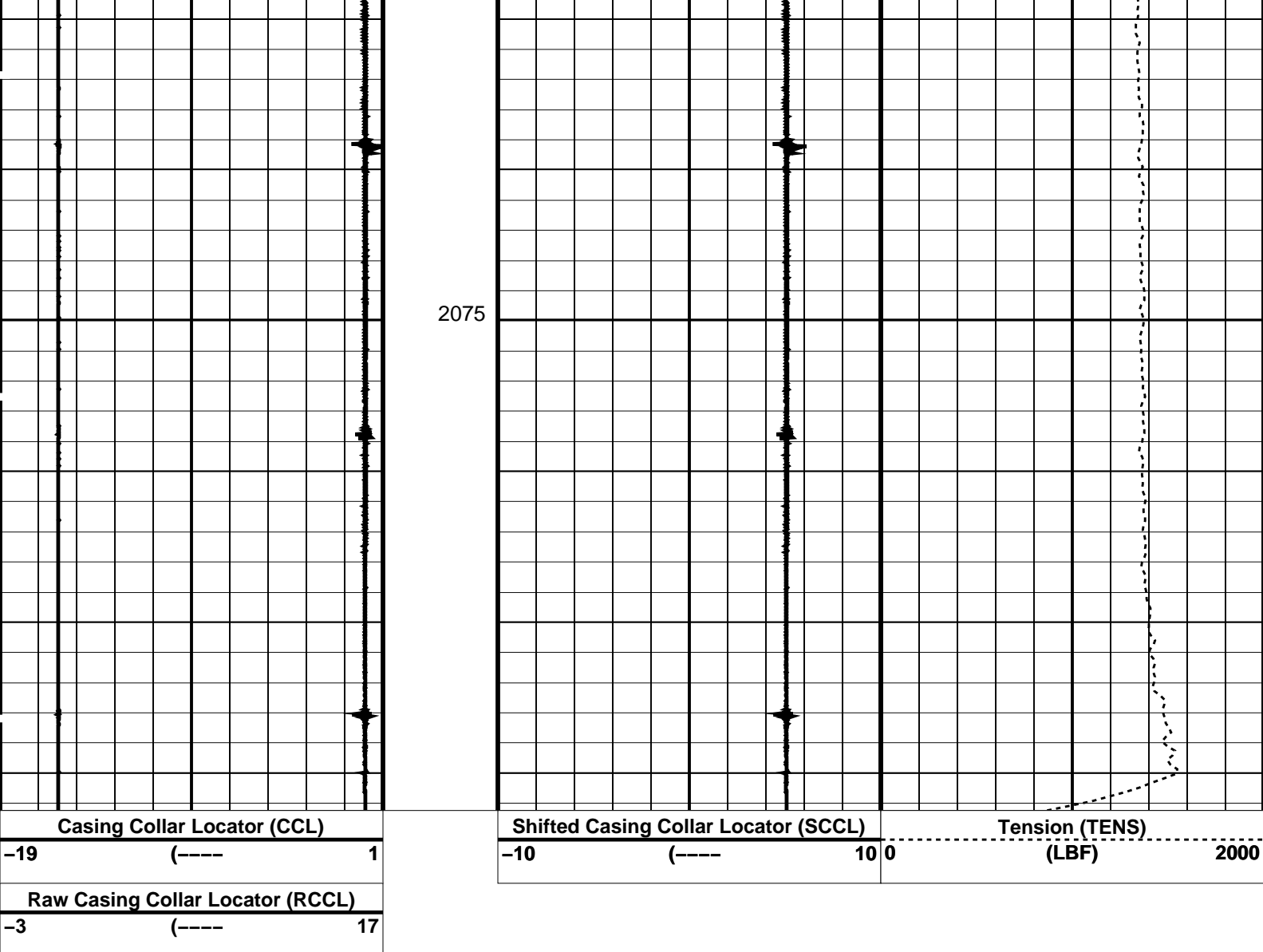
Shifted Casing Collar Locator (SCCL)

-10 (----) 10 0

Tension (TENS)

(LBF) 2000

2050



PIP SUMMARY

Time Mark Every 60 S

Parameters

DLIS Name	Description	Value
CCL-L: Casing Collar Locator		
CCLD	CCL reset delay	12 IN
CCLT	CCL Detection Level	0.3 V

Format: CCLLog Vertical Scale: 1:200

Graphics File Created: 02-May-2007 03:28

OP System Version: 14C0-302
MCM

SHM_GUN 14C0-302 CCL-L 14C0-302

Output DLIS Files

DEFAULT PERFO_006LUP FN:7 PRODUCER 02-May-2007 03:28

Schlumberger

Correlation
Pass

Company: Esso Australia

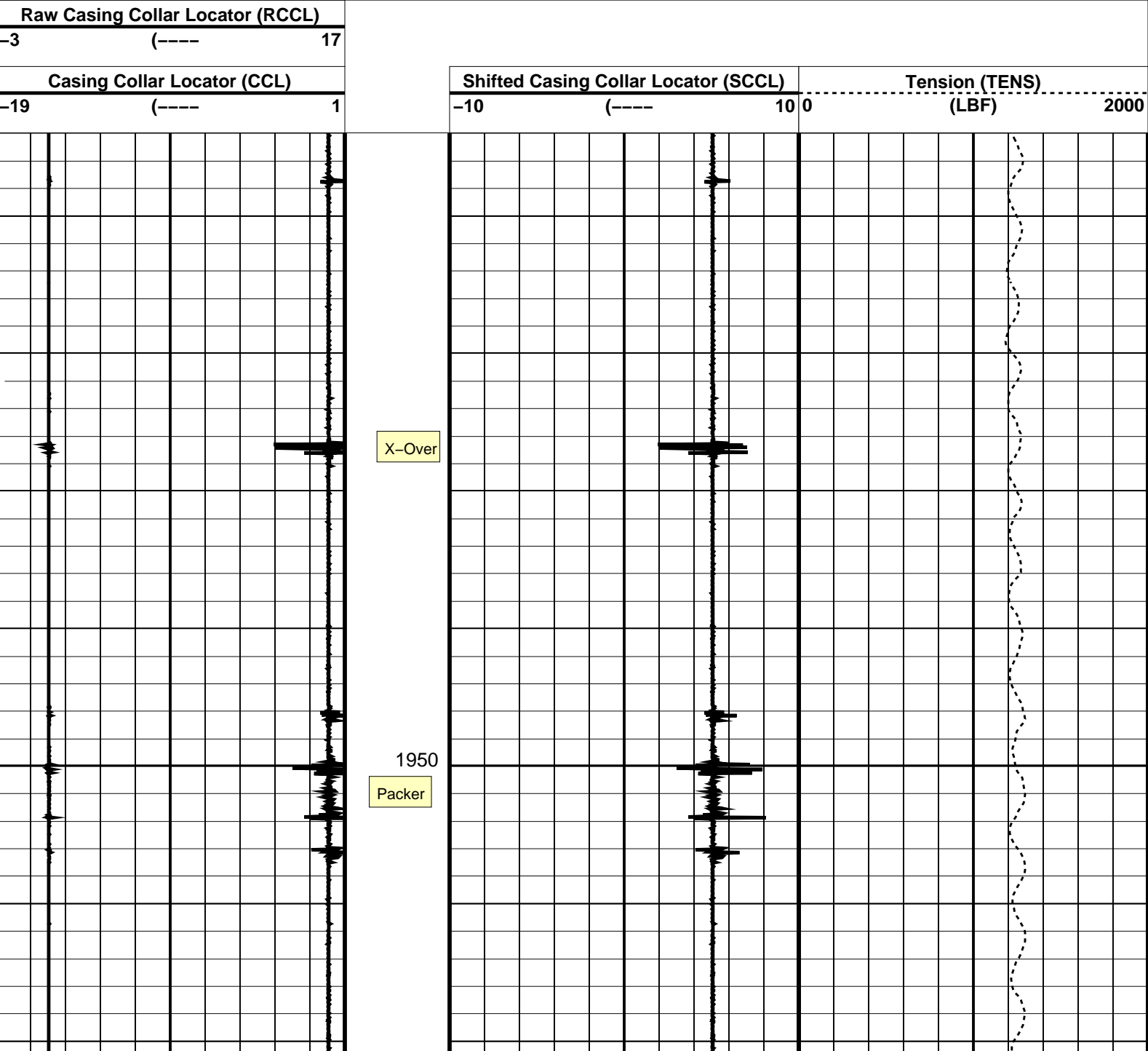
Well: SNA A-24a

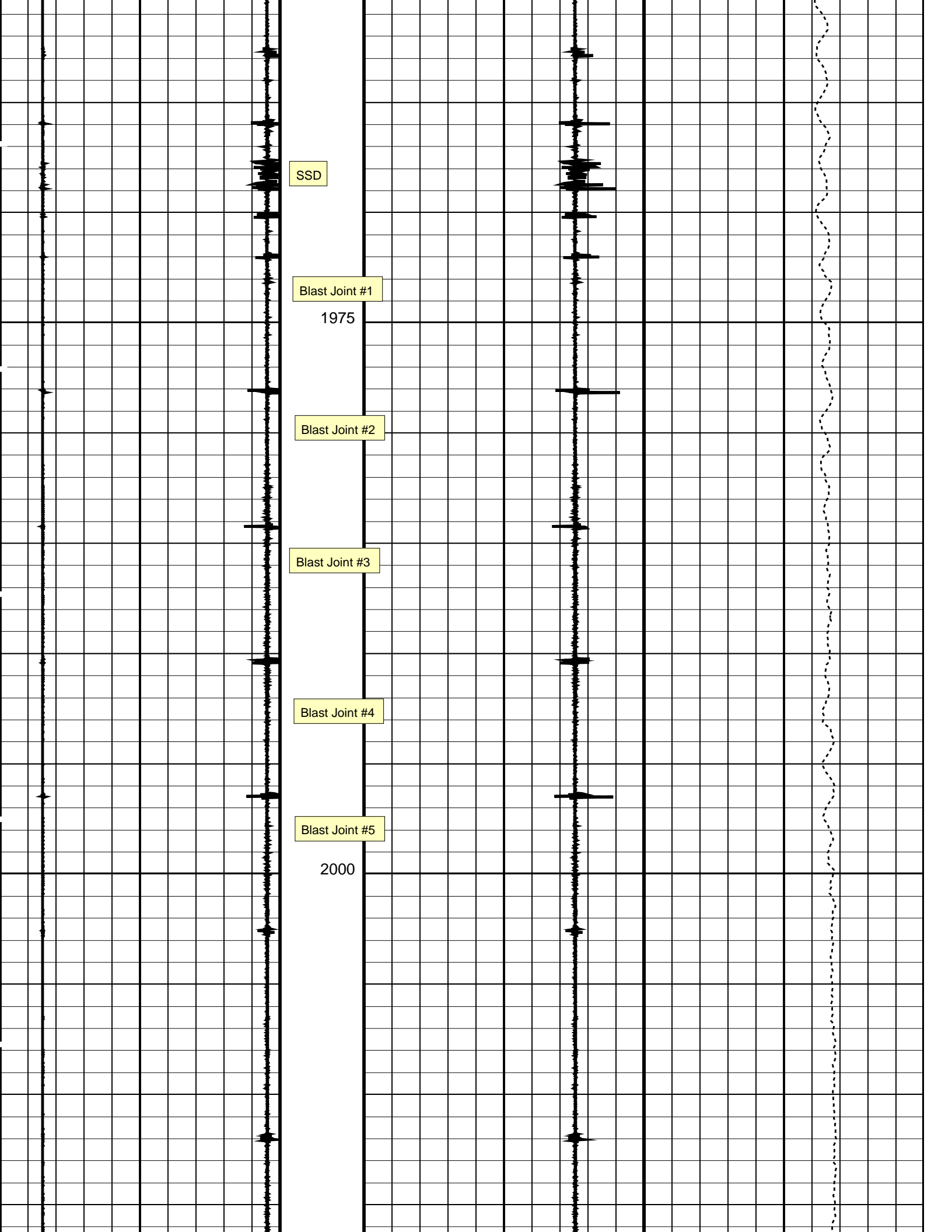
Input DLIS Files					
DEFAULT	PERFO_004LUP	FN:3	PRODUCER	02-May-2007 02:59	2100.8 M 1929.1 M
Output DLIS Files					
DEFAULT	PERFO_004PUP	FN:5	PRODUCER	02-May-2007 03:21	2098.1 M 1926.9 M

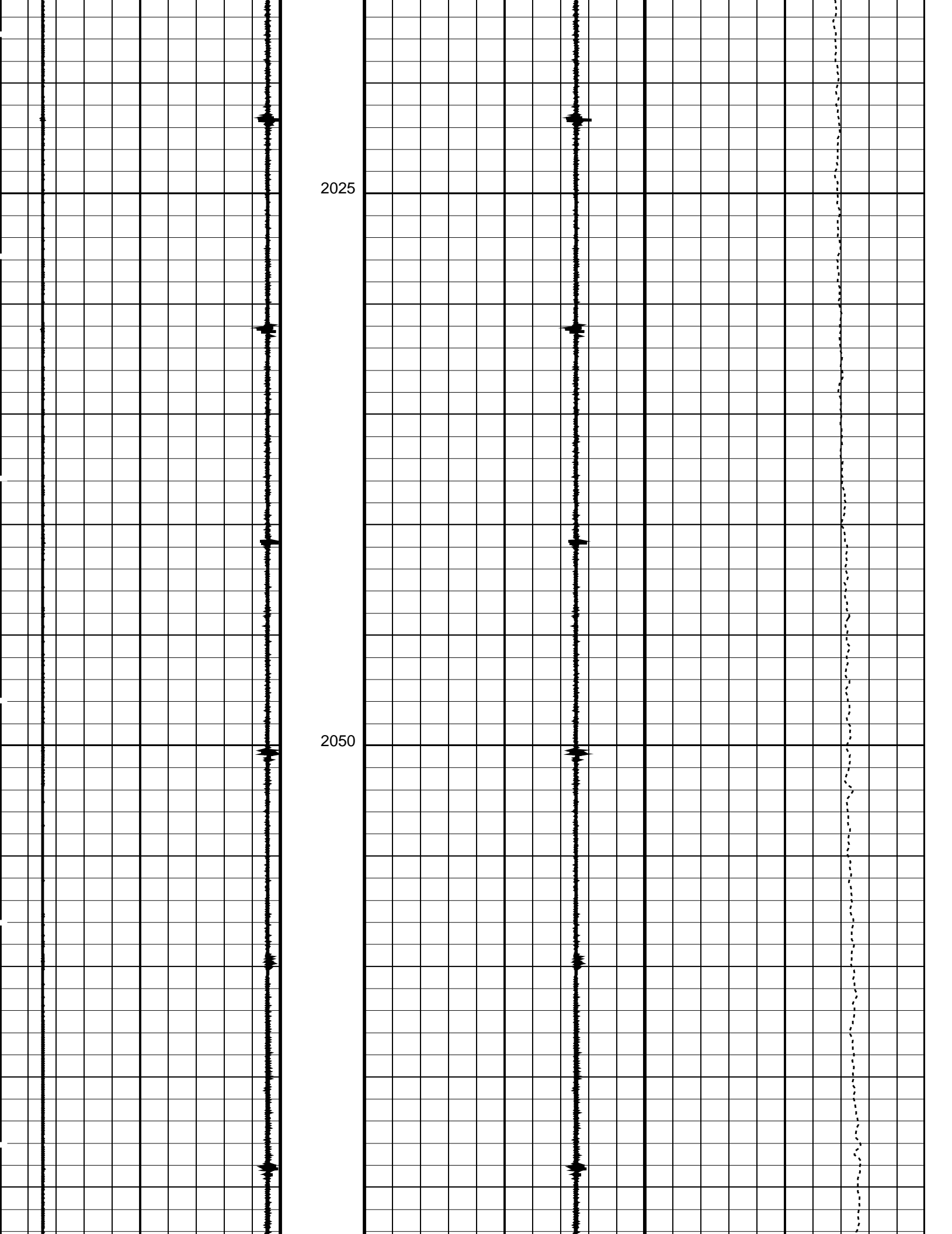
OP System Version: 14C0-302			
MCM			
SHM_GUN	14C0-302	CCL-L	14C0-302

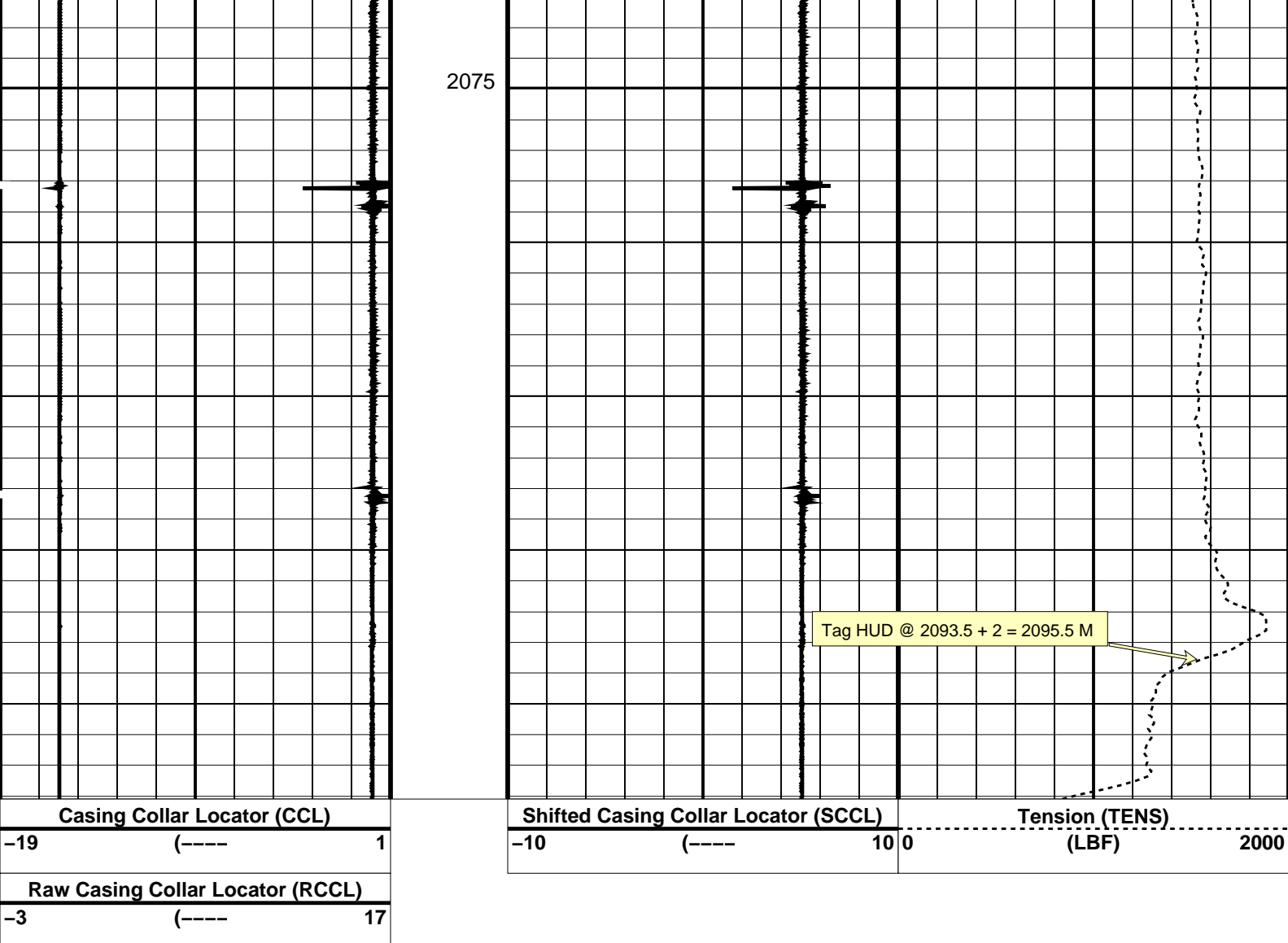
PIP SUMMARY

☒ Time Mark Every 60 S









PIP SUMMARY

Time Mark Every 60 S

Parameters

DLIS Name	Description	Value
CCLD	CCL-L: Casing Collar Locator	12 IN
CCLT	CCL reset delay	0.3 V
	CCL Detection Level	
DO	System and Miscellaneous	
PP	Depth Offset for Playback	-2.8 M
	Playback Processing	NORMAL

Format: CCLLog Vertical Scale: 1:200

Graphics File Created: 02-May-2007 03:21

OP System Version: 14C0-302

MCM

SHM_GUN 14C0-302 CCL-L 14C0-302

Input DLIS Files

DEFAULT PERFO_004LUP FN:3 PRODUCER 02-May-2007 02:59 2100.8 M 1929.1 M

Output DLIS Files

DEFAULT PERFO_004PUP FN:5 PRODUCER 02-May-2007 03:21

Company: Esso Australia

Schlumberger

Well:	SNA A-24a
Field:	Snapper
Rig:	ISS Rig 22
Country:	Australia

3.65" Powercutter Tubing Cut Record 1-May- 2007
